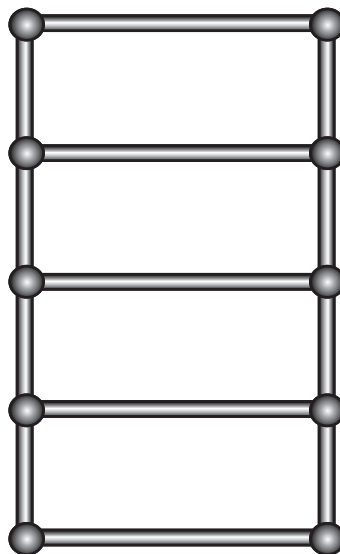




Technical Specification Guide

B - SERIES

HEATED TOWEL RAIL



* BRACKET DETAILS & INSTALLATION GUIDE

HYDROTHERM AUSTRALIA PTY. LTD.

96 COMMERCIAL DRIVE THOMASTOWN VICTORIA 3074 AUSTRALIA

TEL +61 (0)3 9464 4622 FAX: +61 (0)3 9464 4722 EMAIL: info@hydrotherm.com.au

www.hydrotherm.com.au

B SERIES TOWEL RAIL

Vision and innovation has created the new generation B-Series Heated Towel Rail.

Designer influence and sensuous warmth transcends in a sybol of sophisticated style.

Characterised by classical features , the B-Series brings timeless elegance into your bathroom.

Models

- Electric
- Hydronic
- Non-Heated

Finish

- High Polished Chrome

Rungs

- 5 (250mm spacing)

Height

- 1060 mm
- 1150mm including U-bend for hardwiring

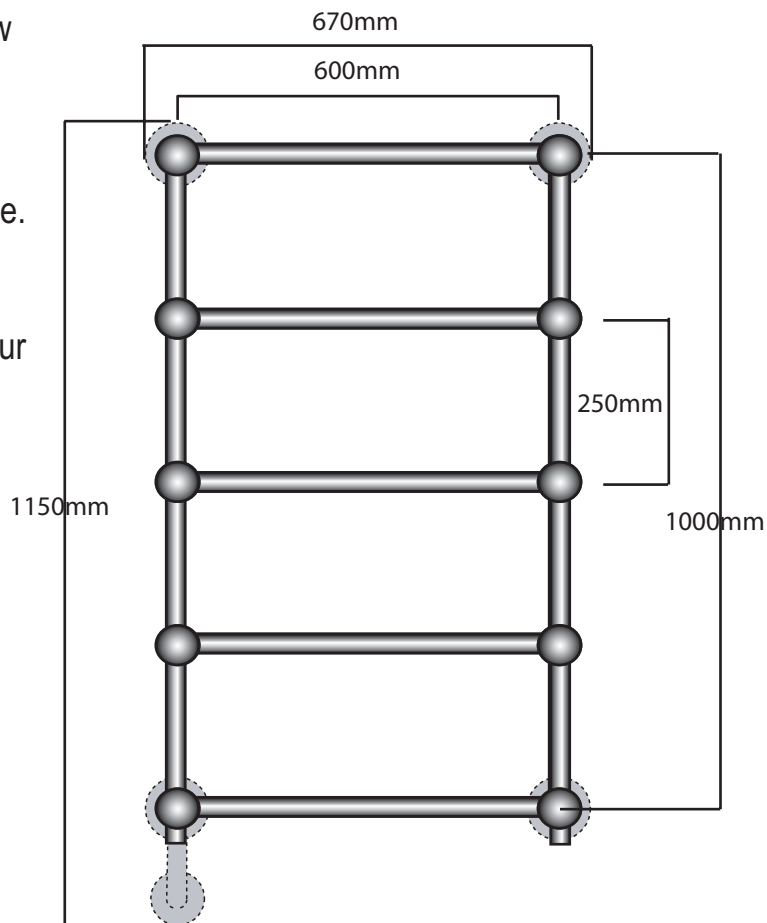
Width

- 600 mm centre to centre
- 670 mm overall

Power

- 100 Watt ,
- Water Immersion Element
IP 55 Rating

Heating element can be changed from left to right. Simple turn unit upside down. Unscrew both Element and Pressure relief valve and swap over.



Models	Voltage	Watts	Vertical Tube Diametre	Horizontal Tube Diametre	Overall Height	Overall Width includes fixings	Width C/C Vertical Tubes	Depth
B-Series	240 / 110	100	25.4mm	25.4mm	1150mm	670mm	600mm	105mm



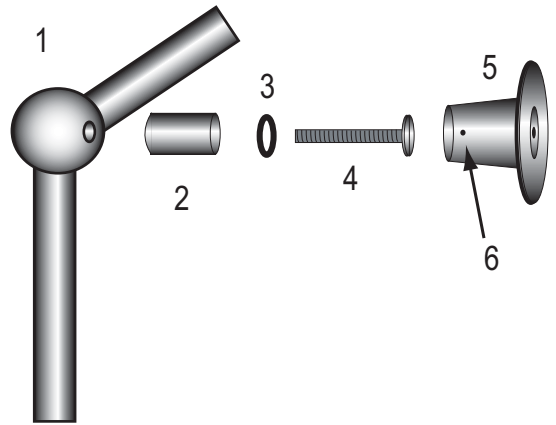
B SERIES INSTALLATION

STEP 1

As per the diagram, fit sleeve 2, washer 3, nut 4, and bracket 5 to the hole at the back of the ball joint.

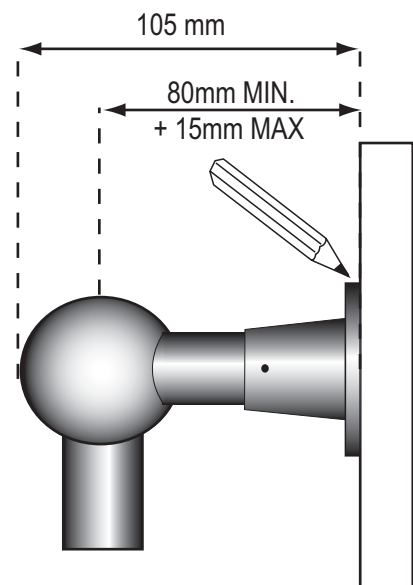
The washer 3, is placed on top of the sleeve 2, and the nut 4, is screwed into the hole, through the washer and the ball.

Slide the bracket 5, over the sleeve assembly and leave in place to measure alignment of brackets on the wall.



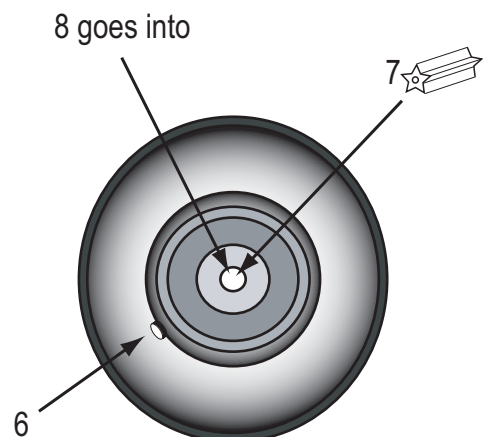
STEP 2

When the brackets are in place, hold the towel rail up to the wall and with a pencil, mark around all the brackets so that you may align the unit.



STEP 3

Remove the brackets from the sleeve assembly. Take one bracket and carefully drill the hole to insert the screw 8 (for tiled walls a masonry plug 7 should be placed in the wall).

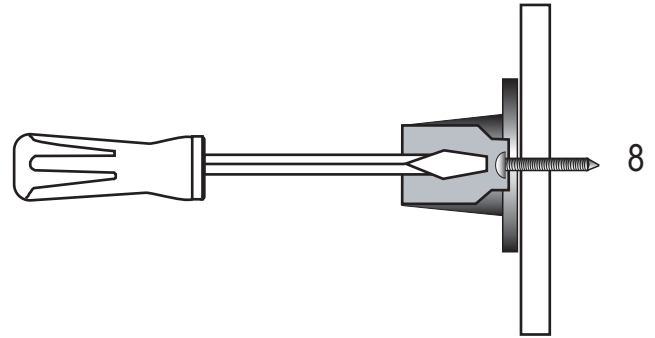


B SERIES INSTALLATION PG 2

STEP 4

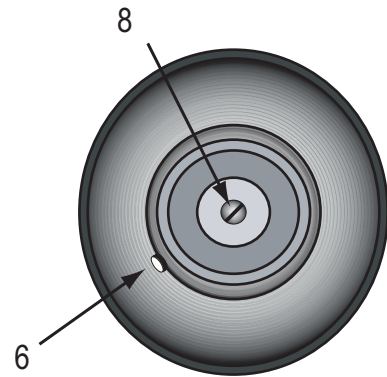
Using the screws provided, the bracket may be screwed into place.

PLEASE NOTE: Do not over-tighten, as some sliding movement in the bracket is required to allow expansion and contraction of the heated metal.



STEP 5

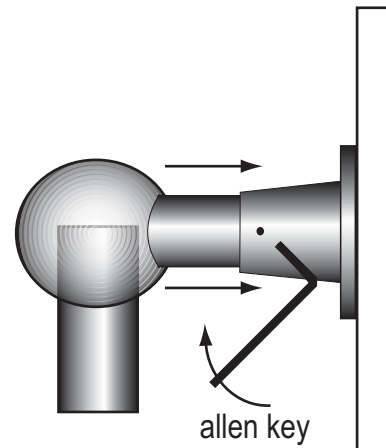
When the brackets are fixed to the wall, use the allen key to undo the screws 6 on the sides of the brackets.



STEP 6

Slide the towel rail into place, then with the allen key secure the screw 6.

Do not tighten the screw 6 too much, as this will impede removal of the unit if required.



Manufactured by Hydrotherm Australia, 96 Commercial Drive Thomastown Victoria 3074
Tel: +61 3 9464 4622 Fax: +61 3 9464 4722 Web: www.hydrotherm.com.au Email: info@hydrotherm.com.au

This appliance is not intended for use by young children or infirm persons without supervision.
Towel Rail must be installed so that the bottom rail is at least 600 mm above the floor to avoid a hazard for children.
The cord extension set must be positioned so that it is not subject to splashing or ingress of moisture.
The supply shall have means for disconnection with an air gap in all active conductors incorporated in the fixed wiring according to the Wiring Rules in AS/NZS 3000:2000

